

**PLANNING FOR  
ACADEMIC SUCCESS**

**SENSIBLE FUTURE  
INVESTMENTS**

**COMMUNITY  
MINDED**



# Capital Project Committee

February 5, 2018

# Meeting Agenda

- \* Results of Building Condition Survey
- \* Agriculture Program Needs
- \* Updates
  - \* Land Purchase
  - \* Construction Manager Request for Proposal
  - \* Administrative Office including CSE
- \* Next Steps

# Building Condition Survey Results

- \* Every 5 years school districts are required to complete and are aided on performing a Building Condition Survey. The survey becomes the starting point for a capital project.
- \* The needs identified in the last building condition survey totaled:
  - \* Elementary School \$1,698,960
  - \* Middle/High School \$3,543,550

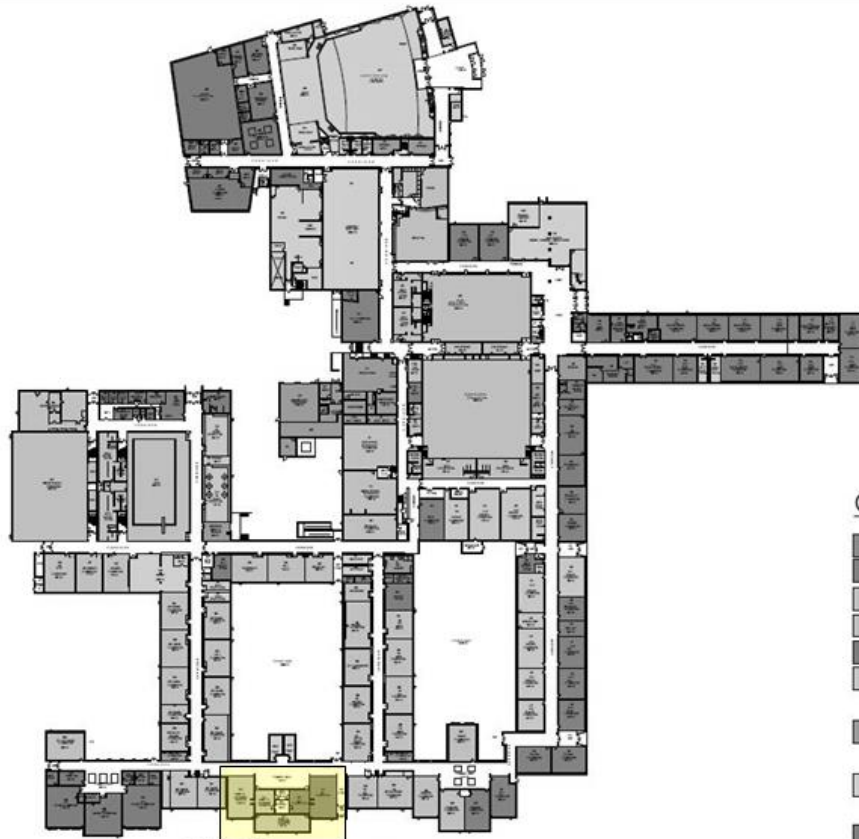
**\*\*\*Breakdown of allocations provided in your packet**

# Agriculture Program

## \* Classroom Needs:

- \* The **current location** of the Agriculture room is ideal for ready access to both Middle and High School students.
- \* Currently, the Agriculture Program includes two Middle School courses & two High School courses. Our vision for this program includes the continuation of the existing courses plus an additional High School course and an exploratory 6<sup>th</sup> grade portion. The current Agriculture classroom would need to be **expanded** in order to address these larger groups as well as the storage needs for the program.
- \* **Plant science** is a major component of the Introduction to Agriculture courses in the MS/HS as well as Horticulture/Introduction to Landscaping, which is planned for the 2018-19 school year. A high tunnel greenhouse, with easy access from the Ag room, will address the needs of those classes while also offering the opportunity for enrichment activities for our elementary students.

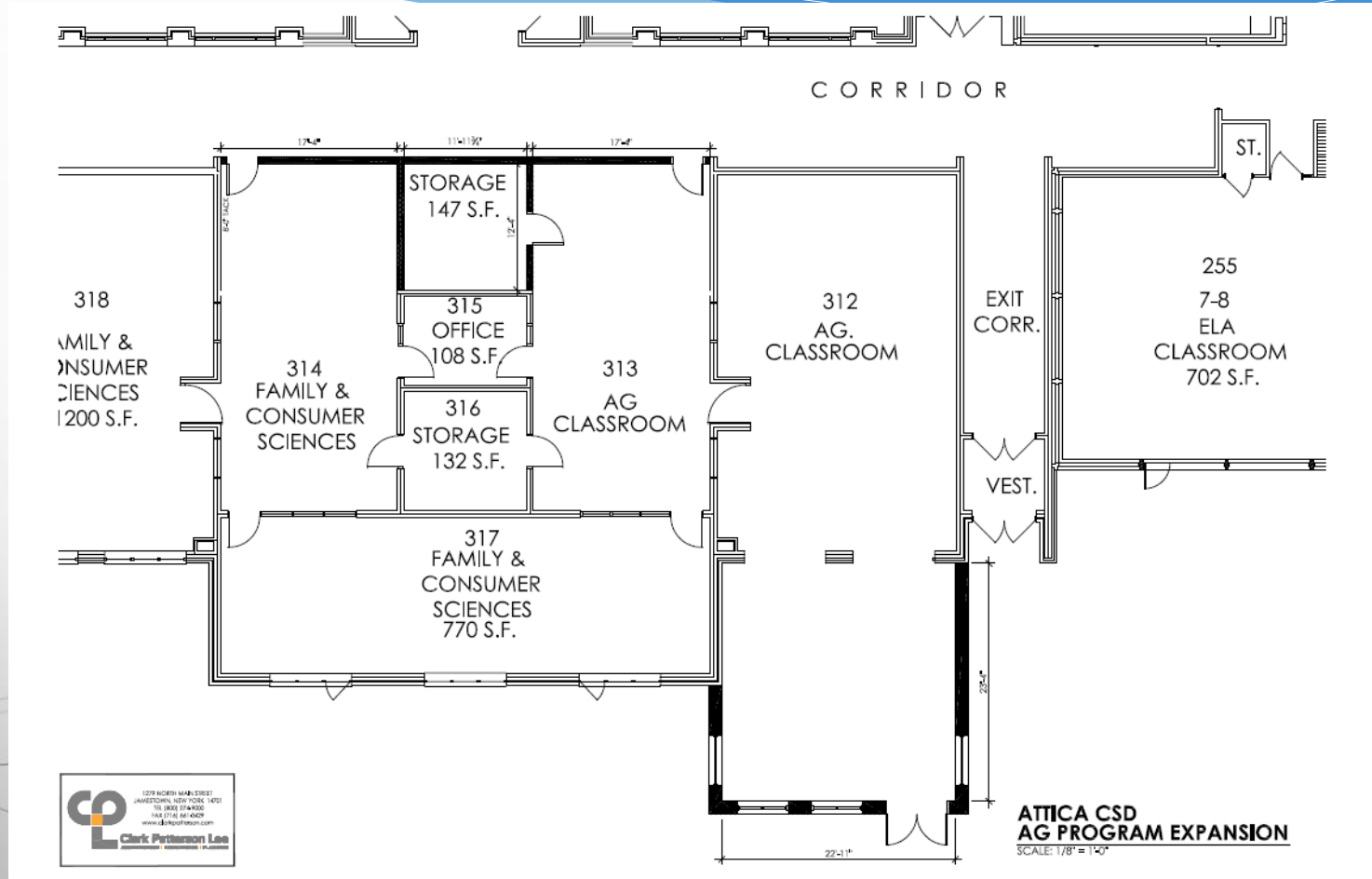
# Agriculture Program (cont.)



## COLOR KEY

- ELEMENTARY CLASSROOM
- HIGH SCHOOL CLASSROOM
- MIDDLE SCHOOL CLASSROOM
- PHYSICAL EDUCATION SPACES
- MUSIC/ART CLASSROOM
- SCIENCE CLASSROOMS/LABS AND SUPPORT SPACES/PREP ROOMS
- FACILITY SUPPORT SERVICES-STORE ROOMS, MAINTENANCE, MECHANICAL ROOMS
- STUDENT SUPPORT SPACES-LIBRARY/ COMPUTER LABS/CAFETERIA/AUDITORIUM
- ADMINISTRATIVE SPACES
- CIRCULATION

# Agriculture Program (cont.)

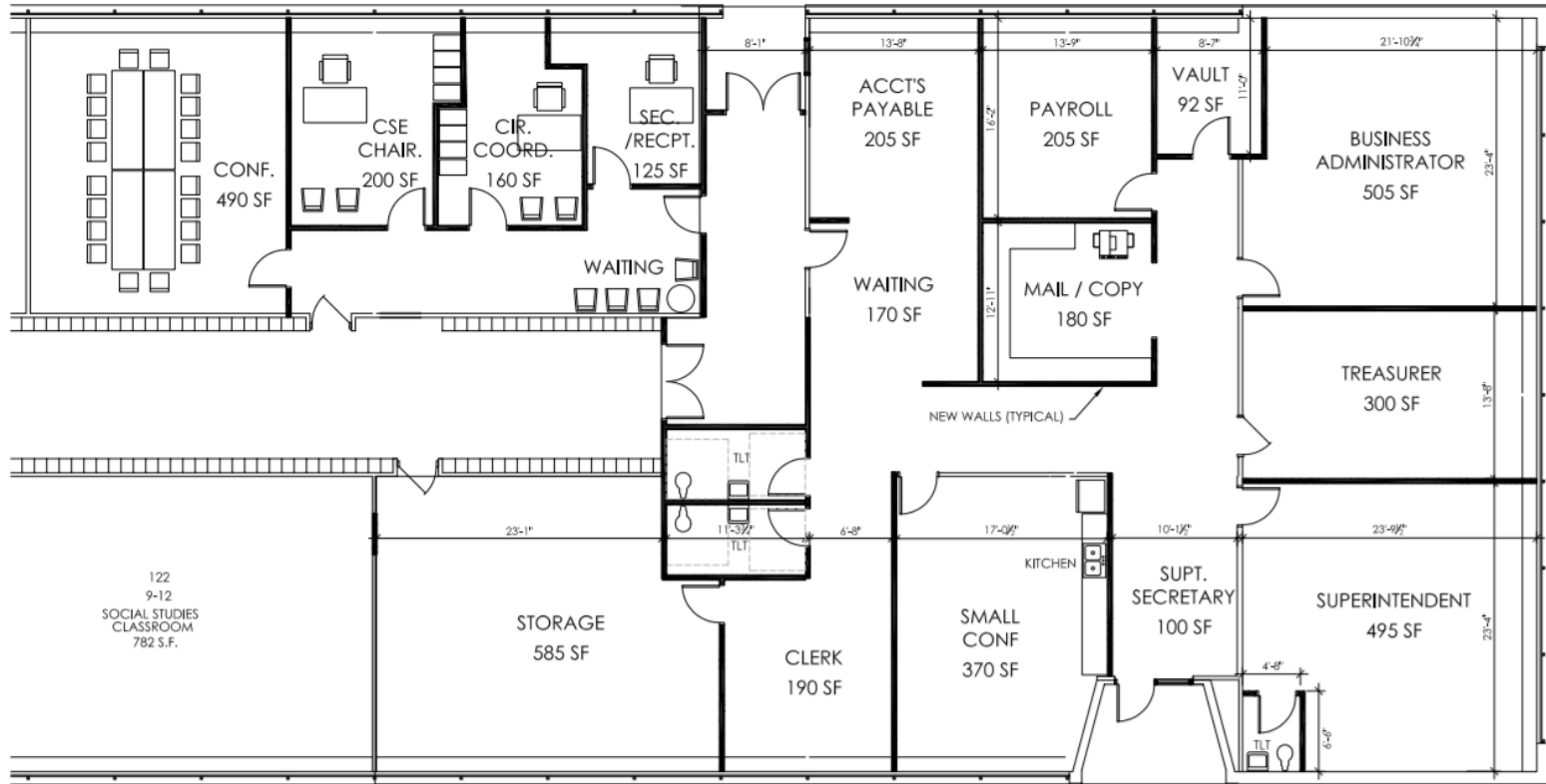


\*\*\* Cost Estimate provided in packet

# Updates

- \* Land Purchase
- \* Construction Manager Request for Proposal
- \* Administrative Office including CSE

# Administrative Office/CSE



**RENOVATION OF NORTH WING TO ADMINISTRATION SUITE**  
SCALE: 1/8" = 1'-0"

OPTION 2

**\*\*\* Cost Estimate provided in packet**



# Next Steps

To continue to develop a vision for the next capital project and prepare a plan to submit to the Board of Education for review and obtain voter approval.

Our next steps:

- \* Maintenance Garage/Storage Needs
- \* Revised Parking Lot Designs based on committee's recommendations
- \* Athletic Facility



**Questions or  
Comments**